

# KILANERIN & ENVIRONS *Community News*

OUR SUSTAINABLE  
ENERGY COMMUNITY

LEARN • PLAN • DO

seai



Summer 2019

June 2019

Maybe we don't think about what is happening around the world in matters of weather and climate every day. From the children in schools to the groups working to increase our thinking about plastics, the oceans, our land, water, future – the topic of climate and climate change is all around us.

What can we do, within our own community and the lives we lead, in consideration of these issues?

This is one of the core questions we intend to answer as our area's Sustainable Energy Community (SEC) develops.

The SEC is wholly community-based. The outline of work is to bring our community along the path that will point to where we can make energy-savings, where we can reduce energy spending, how we can efficiently move to renewable energy sources – these are the reasons we made the initial commit to bring our communities into the SEC world.

The initial work has been completed. Now each household, each farm, each business in the area is requested to take part. A 10-minute survey asking about current energy usage is the cornerstone. Please make the decision to complete and return the survey.

The compilation of the results of this community survey will help to determine the best steps towards reducing energy usage, and making savings available to individual households, including sourcing grant funds for householders to make these changes.

We are one of the first communities in Wexford County to take up the Sustainable Energy Community banner! Please take a bit of time, complete the survey, take the first step. Join us, the Leadership Group, in giving consideration to these issues. We believe the change that will serve all of us is available through this work.

Karen Finigan, on behalf of the SEC Leadership Group

*What's the Kilanerin area Sustainable Energy Community about?*



To support communities around Ireland reduce energy usage, the government has funded the SEAI (Sustainable Energy Authority of Ireland [www.seai.ie](http://www.seai.ie)), for the past 8 years.

We joined up as an sustainable energy community (SEC) in 2018 and are delighted to report that our area has been successfully granted funding. This enables us to engage specialist energy consultants for our community. Their job is to use their expertise to help to guide and advise us about our current energy spend and from there, the best renewable energy sources, grant aid options, and other advice.

Your participation in a household level survey is vital. Please note, the information collected in this survey will be held confidentially.

The energy consultants and the local SEC group will then build a prioritised list of works that can put real savings in the hands of community members. Everyone has the option to participate or not, and the option to take advantage of potential savings or not.

The works may range from suggestions to be done – in individuals' homes, farms, community buildings, public elements – such as Electric Vehicle chargers, other transport schemes, waste / recycling schemes, lighting and more.

There's money to be saved by most of us, in the area of ENERGY SPENDING!

LEARN MORE, MEET CONSULTANTS AT TOWN MEETING, Monday 10th JUNE – Billiard Room, Shamrock Hall 8:30pm

## THE SEC LEADERSHIP GROUP:

John Bardon KBCDA, Leader: Sheltered Housing / Farmer

Fr Denis Browne Parish Priest

Geraldine Carmody NS Principal, Kilanerin

Michael D'Arcy TD Minister of State Dept of Finance, GAA

Anthony Donohoe CC - Gorey Municipal District

Karen Finigan KBCDA, Chair SEC

Mary Fleming KBCDA, designer

Brendan Fortune Electrician

Grainne Hartnett KBCDA, Wexford Walking Trails

John Hegarty CC – Wexford Municipal District

Donal Hayden Businessman, Environmentalist

Enda Kavanagh KBCDA, CEO Solar

Jason Last KBCDA, UCD

Noel Murphy Business owner, biodiversity expert

Geraldine O'Connor Technical & PM background, TT, ICA, Shamrock Hall head

Fionntan O'Suilleabhain CC - Gorey Municipal District

Cathal O'Sullivan Electric Vehicle expert

Ciaran O'Sullivan Deep history of work in environmental area for community

Margaret Woodbyrne Environmentally focussed gardening expert, farmer, TT, ICA

*PS Best wishes to all Junior & Leaving Cert students!!*

# WHO WE CHOSE...

## OUR PARTNER IN THE ENERGY MASTER PLAN AND FOLLOW-ON PROJECTS IS A COMPANY CALLED, ACTION RENEWABLES

Once our funding to do the work and create an Energy Master Plan (EMP) was approved by Sustainable Energy Authority of Ireland (SEAI), we sent out proposals to over 15 groups. We received 6 proposals and from these we determined **Action Renewables** had the best profile of industry knowledge and experience to do the job for us.

**Action Renewables** was formed in 2003 as a 100% funded subsidiary of the Northern Ireland Department for Enterprise, Trade and Investment (DETI) to provide advice and guidance on Renewable Energy Technology.

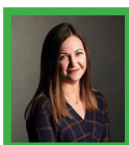
In 2010, Action Renewables became wholly self-funded as a private not-for-profit organisation. They are now in key areas of work including Renewables Obligation Certificates trading services, multiple energy audits and feasibility studies; have partnered in nine EU funded projects

In 2016, **Action Renewables** opened an office in Dublin. They are working closely with the Scouting Ireland Sustainable Energy Group under the SEAI programme 'Sustainable Energy Communities' in developing Energy Master Plans and Registers of Opportunities for 5 of their residential centres across the country.

## MEET THE ACTION RENEWABLES TEAM!



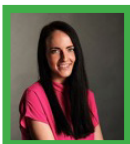
**Jonathan Buick** is head of projects in Action Renewables. His technical and economic expertise in renewable energy spans all technologies, with particular emphasis on wind, anaerobic digestion and solar thermal. This expertise has led to him providing training and advice to a wide range of stakeholders, from the farming sector in Northern Ireland to the Government of Azerbaijan. Jonathan has a MSc in Environmental Management and Policy.



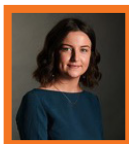
**Dawn Murphy** has a background in Environmental consultancy, works on energy audits, feasibility studies and EU projects. Dawn Murphy joined the AR team in 2006, providing renewable energy advice to householders and community groups. She holds a masters degree in Environmental Management, is a registered environmental auditor and Environmental Practitioner with the Institute of Environmental Management and assessment. (IEMA).



**Mark Compston** is a Senior Project Manager with over 12 years' experience in the renewable energy industry, largely in technical roles. Mark supports clients with renewable energy services such as feasibility studies, energy audits and project management; particularly in relation to green gas and renewable transport. Mark holds a BA (Hons) Business Studies degree and is a Chartered Manager.



**Bernadette Convery** manages the Energy and Carbon Management services within Action Renewables, she is registered as a Low Carbon Consultant with CIBSE, with a particular focus on ISO 50001 Energy Management Systems. Prior to joining Action Renewables Bernadette achieved a BSc in Geography from Queen's University Belfast and a MSc in Sustainable Energy from University College Dublin.



**Alana Mellon** has recently graduated from Queens University Belfast with a Master's degree in Leadership for Sustainable Development. Alana holds a BSc in Sustainability and Environmental Management from Leeds University and certificates in Climate Change: Risk, Opportunity and Business resilience, and Carbon Footprinting and Management.

### BETTER ENERGY COMMUNITIES GRANT

The SEAI Community Grant Programme supports partnerships between communities, businesses and the public sector to deliver energy improvements in buildings across the country in response to tackling climate change. To date €125 million in community grants has underpinned over €300 million investment in upgrades to 17,500 homes and 2000 non-domestic buildings. The annual energy savings are estimated to be in excess of €50 million.

## SOME EXAMPLES OF ACTION RENEWABLES' WORK

**EXAMPLE 1: ROSCOMMON RURAL PROJECT, Better Energy Community** In 2018, lead project coordinator, Paul Kilmartin, who works with Midland Warmer Homes made the application to SEAI on behalf of the Roscommon Rural project. The project involved carrying out energy efficiency upgrades to four public buildings, three commercial buildings and 19 homes within the community.

- The Grant funding requested was 50% of the total spend, which came to €900,048.62
- 33% was the total energy savings estimated for the project.
- SEAI funded just under half a million euro for this community project.

*How did individual companies get involved?*

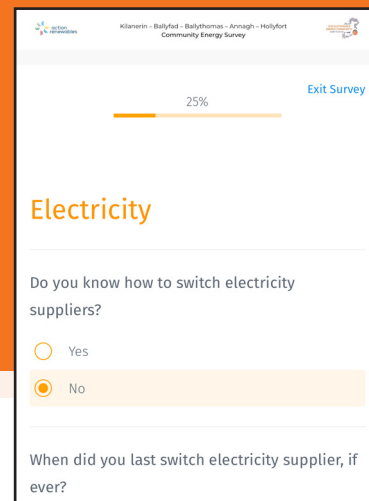
Heat Merchants Group is an independent Irish-owned national business who got involved in the Better Energy Communities grant programme as part of the Roscommon Rural Project.

After deciding they wanted to upgrade their premises, a meeting with Paul Kilmartin concluded that their project was suitable for the local SEAI Community grant application.

Their proposal involved installing a large Solar PV array on the roof of their head office and central distribution centre. NextGen Power were their installation partner and they provided the design for the fitting. This comprised of 470 solar panels with a total output of 150kWp. The project aimed to provide 85% of the total annual energy consumption of the building.

The total cost of the works was €180,000 and 30% or €54,000 was funded through the grant.





## EXAMPLE 2: CENTRE FOR SUSTAINABLE ENERGY

### Rural community-wide energy efficiency improvements:

Although this project is in the UK and from a few years ago, its objectives are similar to those of the Community Development Association (KBCDA) Sustainable Energy Group. Barcombe Parish is situated 5 miles north of Lewes, with a population of 1250 people. The group's efforts have increased the village's capacity to develop renewable energy projects, reduced overall energy consumption and significantly reduced the village's reliance on oil.

### Barcombe Energy Group

Barcombe Energy Group was formed by a group of residents to explore opportunities for making the village more sustainable and energy-efficient. Barcombe is a village in Sussex with approximately 580 properties, a third of which were built before 1920. The village has four main housing types which are typical of villages in the region. None of the homes are connected to the mains gas network so there is a strong reliance on oil for heating.

### The project:

In 2012, Barcombe Energy Group was awarded funding to carry out household energy efficiency assessments, community-building energy assessments, a parish wide renewable energy plan and a wide range of household retrofits across the community.

The first stage of the project involved a domestic energy survey hand delivered to every household in Barcombe Parish. The results were used to identify scope for energy efficiency improvements.

Barcombe Energy Group were supported with a programme of events (including Big Energy Breakfasts) and other activities to engage local residents. These gave householders another chance to complete the home energy survey, meet local specialists and ask questions about their homes and sign up for a range of energy efficiency improvements (including energy monitors, energy saving lighting, draught proofing makeovers and free insulation).

The project was publicised through the local parish magazine, the school, a banner located at a focal point in the village, notice-boards and other local networks, coupled with vocal support from the local vicar (who included it in a sermon after having his loft cleared and insulated). A town crier was used to encourage local residents to attend the Big Energy Breakfasts where they could sign up for home energy improvements. These awareness-raising activities generated a strong groundswell of interest and support for the project across the community.

Local installer Downs Energy was chosen as the insulation partner for the project because it was a local company and demonstrated strong support for the scheme, including by donating free draught-proofing kit. Similarly LED light replacements were undertaken by a specialist local company and the results were demonstrated through the local parish magazine. To install the draught-proofing, the group worked with the local Transition Town group in Lewes which had recently set up a small incubator draught-proofing business.

Project funds were used to contribute to the costs of loft and cavity wall insulation where they could not be met by CERT funding. The housing assessment carried out by CSE and combined with the

local Parish renewable energy assessment helped the Barcombe Energy Group build up a robust 'Energy Plan' that the village can use for developing a sustainable future.

### Achievements:

During 2012, 150 homes had cavity wall and loft insulation installed – 20% of the village

- Many homes have LED lighting retrofits
- The four main housing types in the village were assessed using the SAP system (Standard Assessment Procedure (SAP) is the methodology used by the Government to assess and compare the energy and environmental performance of dwellings) and Brighton University built an online 3-D modelling tool as a reference for local homeowners
- There is now a monthly draught-proofing team visit to the village
- Some local homes have decided to install renewable energy technologies in the form of air source heat pumps, biomass boilers and solar panels (PV and thermal)
- Two local sustainable businesses (reclaimed furniture store and vegetable box scheme) have undertaken PV projects that have been funded by the community through Ovesco
- The group are planning a large solar PV project and a wind turbine to continue to reduce their dependence on oil and provide a long-term income for more energy efficiency improvements
- The group successfully applied for funding to DECC's RHPP Communities scheme, for heat generating renewable energy technology, with the offer extended to neighbouring parishes

***"This has been a really exciting project for Barcombe Village. We are a community reliant on oil and the changes we have made will really help our community improve our energy usage and save money on our household bills"***

Ollie Pendered, Barcombe Energy Group

### Recommendations

Following the launch and initial surge of activity, ensure you keep the community up-to-date with the project and its achievements to maintain momentum, for example through a regular newsletter.

- With a project involving a potentially large number of people and partner organisations, it is important to maintain a core management group of three or four people with specified responsibilities to drive and coordinate progress.
- In the absence of LEAF funding, a similar project could still have gone ahead. We would have carried on having local energy group meetings and fairs and engaging with local installers suppliers, and would have looked at other funding sources including the Lottery, energy companies and Landfill Tax, all of which are options that other groups could consider.

### Links:

Project website: [www.barcombe.community21.org/energyclub](http://www.barcombe.community21.org/energyclub)

Project overview: <http://youtu.be/8JfCxPVq6bE>

LEAF project website: <http://youtu.be/YX8XW7he010>

Source: <https://www.cse.org.uk/local-energy/resources>

# TOP 8 QUESTIONS

## WHAT IS A SUSTAINABLE ENERGY COMMUNITY (SEC)?

The Sustainable Energy Association of Ireland (SEAI) started inviting communities to become SECs in 2017 and backed the invitation with expertise to assist and funds to support getting started. There is a pathway set out and early successes from the first communities to take this up. KBCDA is one of the first rural areas of our size to take up the SEC. We believe there is good value to be had across the area – homes, farms, public buildings, businesses – all will participate, as they choose – to look at our current energy spend and determine best ways to reduce energy usage and bring better value to us all.

## WHAT CAN YOU DO?

The first job for us all is to take part in a survey that asks about the current energy usage at household level. This survey will take approximately 10 mins to complete and when we have information from across the homes in the area, we are then able to look at where and how changes and savings can be organised. That's it, for starters.

## WHY IS IT IMPORTANT TO REDUCE THE ENERGY WE USE?

Most of Ireland's energy comes from imported fossil fuels like oil, coal, peat

and gas. These fuels burn in our power stations to produce electricity and are used to heat our homes and run our cars. These fuels emit carbon dioxide, a proven major contributor to the changes in our climate. Our homes use 25% of the energy used across the country.

## WHAT IS CLIMATE; WHAT IS WEATHER?

Sometimes today there is confusion about weather and climate. The short difference between them is time. Weather is the condition of the atmosphere at a particular place over a short period of time, whereas climate refers to the weather pattern, using statistical data, of a place over a long enough period to yield meaningful averages; the usual condition of the temperature, humidity, atmospheric pressure, wind, rainfall, and other meteorological elements in an area of the Earth's surface for a long time.

## WHAT CAN WE DO AT HOME?

Through the SEAI, there are grants available for upgrades to the home that will improve warmth of the home through adding insulation, and help with the cost of installing renewable energy sources.

In Wexford County to date there have been:

Home Energy Grants: 10,149

Total homes upgraded: 15,147

Free Energy Upgrades: 4,998

% Homes upgraded: 22%

## WHY ARE ENERGY RATINGS IMPORTANT TO ME?

Energy ratings are showing up on buildings (including houses), appliances and products. They are meant to help us understand and select products that are energy efficient – this can save us money and will assist in reduction of carbon footprint in many cases. If you were to sell your home / buy a home, you'd need to know the energy rating.

## HOW LONG DOES IT TAKE TO USE 1 UNIT OF ELECTRICITY?

60-watt ordinary light bulb: 17 hours

12 watt CFL light bulb: 83 hours

6 Watt LED: 166 hours

Electric shower: 7-10 mins

Kettle: 20-40 mins

Cooker (large ring): 20-40 mins

## WHAT DOES AN AVERAGE HOUSE IN IRELAND SPEND ON HEATING AND ELECTRICITY IN 1 YEAR?

€1,990 annually.

## THE FINAL PARAGRAPH OF NATHANIEL RICH'S NEW BOOK, "LOSING EARTH".

"Everything is changing about the natural world and everything must change about the way we conduct our lives. It is easy to complain that the problem is too vast, and each of us is too small. But there is one thing that each of us can do ourselves, in our homes, at our own pace — something easier than taking out the recycling or turning down the thermostat, and something more valuable. We can call the threats to our future what they are. We can call the villains villains, the heroes heroes, the victims victims and ourselves complicit. We can realise that all this talk about the fate of Earth has nothing to do with the planet's tolerance for higher temperatures and everything to do with our species' tolerance for self-delusion. And we can understand that when we speak about things like fuel-efficiency standards or gasoline taxes or methane flaring, we are speaking about nothing less than all we love and all we are."

## OTHER LOCAL NEWS

### FIELD DAY 16th JUNE 2pm

The Kilanerin NS / Ballythomas NS annual Field Day is fast-approaching. Always a brilliant day out for the whole family, even including your dog!

New this year is a **jersey / football boot stall** - a great way for families to save money on barely-worn essentials. Don't miss it!!



## KCC CAFÉ & PIZZERIA

KCC CAFE & PIZZERIA Open daily: 10:30am – 3:30pm.

Friday & Saturday evenings: 5:30pm – 8:30pm. Available for take-away or eat-in. All welcome.



## BIODEGRADABLE BOTTLES

Call into the KCC Café to get your beautiful and functional Sustainable Cups and Bottles.

**Cups – €8.00, Bottles – €5.00 (normally €7.50!) or buy a set of 2 (1 of each) for €12.00**

Cups are made of Bamboo & Silicone.

Bottles 750ml are made of fully biodegradable sugar cane. While stocks last.



## KILANERIN PLAYGROUND OPENING THURS 13th JUNE

More great news for the area! Fantastic new playground opening this week! Huge thanks go out to everyone involved in making this happen!

**Kilanerin & Environs SEC** Any questions or comments, please call, email or text:

Karen Finigan 083-878 2718; karenfinigan@hotmail.com Facebook group: **Sustainable Kilanerin**