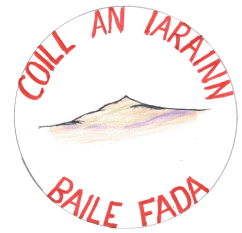
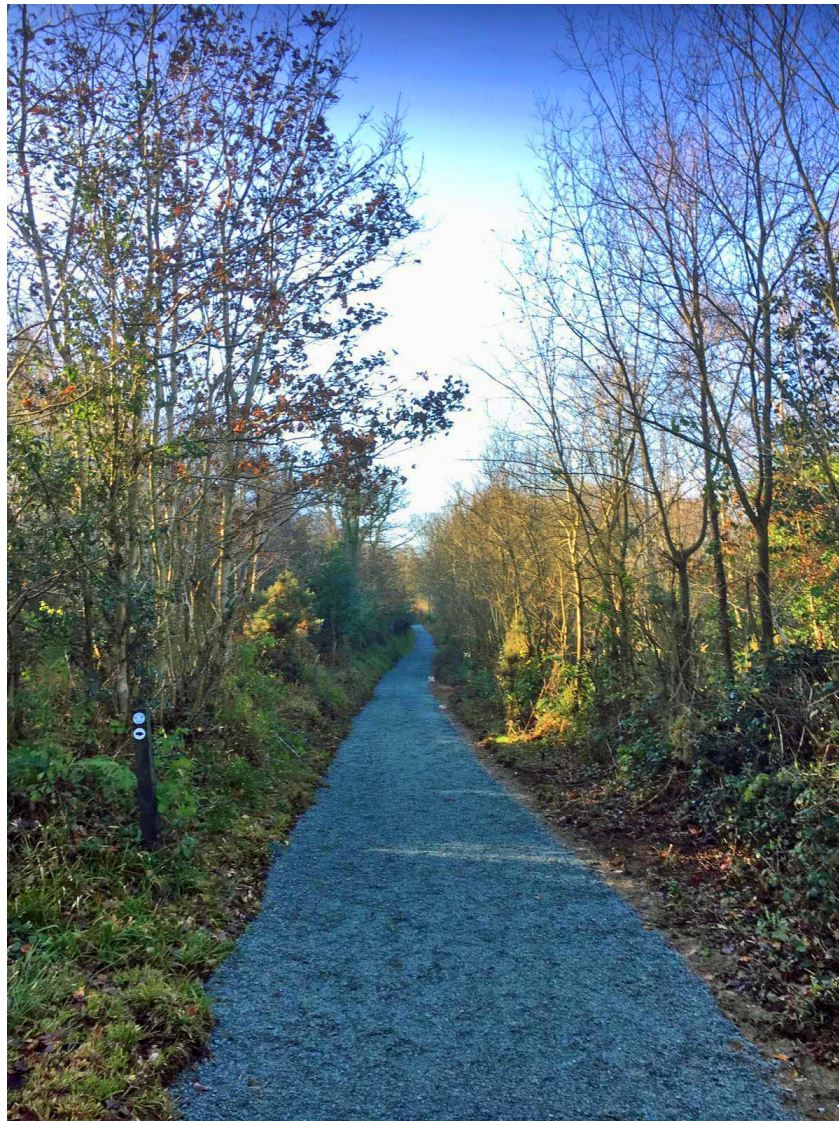


# ANNUAL REPORT 2018/19



March  
2019

KILANERIN-BALLYFAD COMMUNITY  
DEVELOPMENT ASSOCIATION



**Report on the activities of the Community Development Association**

# Annual Report 2018/19

KILANERIN-BALLYFAD COMMUNITY DEVELOPMENT ASSOCIATION

## CHAIRPERSON'S ADDRESS

There will be an AGM on March 19<sup>th</sup> 2019 to report on the financial year 2017/18 and the activities of KBCDA over the last 10 months. Despite the short reporting year, an incredible amount of work and progress has occurred through the hard work and dedication of members of the KBCDA Committee. In recognition of the recommendations of the last AGM, we now have a number of subcommittees and working groups that have helped to disseminate the work across the membership and the community more broadly. This has significantly contributed to the flourishing of many enterprises that KBCDA have facilitated.

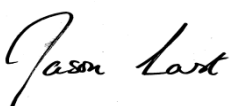
Our KCC Gym now has around 250 active members, classes and courses have expanded, the KCC Café is now providing a welcome retreat every day of the week and small businesses are beginning to grow, including a hair salon and a physical therapy treatment room.

Earlier in 2018, the Association was awarded funding from the Town and Village Renewal Scheme which has enabled the completion of KCC Café, the creation of a shared workspace / business centre and treatment rooms in addition to enabling the completion of common areas both internally and externally. A Playground Committee has been established, and a number of successful fundraising events have taken place in collaboration with Kilanerin National School, Kilanerin GAA and also in collaboration with Santa. We are pleased to report that €13,000 has been raised by these events, which together with €25,000 from Wexford County Council bring the community closer to the €50,000 required for phase 1 of the playground. Furthermore, the new Ballyfad Hall is nearing construction completion, the Woodland Walks have been rendered accessible and a Sustainable Energy Community have hosted a successful Sustainable Energy Fair.

We would encourage anyone interested in helping, to make contact with a member of the Committee, particularly those with interest in the development of youth facilities.

Sincere thanks to everyone who has supported KBCDA over the last year.

Yours sincerely



Jason Last, KBCDA Chairperson

## CURRENT COMMITTEE

Chairperson	Jason Last
Vice Chairperson	John Bardon
Secretary	Cathal O'Sullivan
Treasurers	Peter Bushe, Dave Naughton
Members	Padraic Caulfield Karen Curtis Aileen Cooper Anthony Donohue Nicky D'Arcy Michael D'Arcy Mary Fleming Gráinne Hartnett Donal Hayden John Hegarty Elaine Hughes Seamus Hughes Enda Kavanagh Dolores Murphy Pat O'Connor Peter O'Connor Fionntán Ó Súilleabháin Julie Sammler Deirdre Sheriff
CE Community Secretary	Tina Gregory
CE workers	Pat Howard, Tom Bergin, Eamon Byrne
RSS worker	Pat Sheehan
Bankers	Ulster Bank Gorey, Bank of Ireland, Carnew
Accountant	Donal Noonan, Michael Doyle & Co
Solicitors	Donal O'Sullivan & Co.
Architects	Enda O' Leary, HKR

***The Committee of the Development Association extends its sympathy to the families of those supporters and contributors who have passed away during the past year, and to all in our community who have suffered loss.***

## TREASURER'S REPORT TO MARCH 2017

**Copies of the full audited accounts for the year to 31<sup>st</sup> March 2018 will be available for inspection at the AGM.**

**Income and Expenditure Account for year to 31/03/2018**

<b>Income :</b>	€	€
Voluntary Contributions	11,574	
Revenue rebate re contributions	2,617	
Sports Hall rental & Gym membership	21,192	
FAS, Arts & amenity grant	<u>3,584</u>	38,967
<b>Other Income</b>		
Sale of Ballybeg site		139,506
Grant received re Equipment		25,000
<b>Expenditure :</b>	€	€
Development Works	179,015	
Fixture, Fittings & Equipment	43,463	
Donations - Other Parish Events	6,000	
Local Infrastructure	1,780	
Insurance	820	
Wages	3,238	
Gym, centre expenses	8,190	
Cleaning & Rental expenses	2,349	
Bank Interest and Charges	6,749	
Office Expenses	2,041	
Accounts & Professional Fees	2,042	
ESB & Heating	6,496	
Expenses re Strictly fund raising event	5,722	
Sundry Expenses	<u>2,042</u>	269,947
<b>Excess of Expenditure over income including capital items</b>		-66,474
<b>Funded by</b>		
Increase in creditors	12,128	
Increase in members loans	<u>45,000</u>	57,128
<b>Decrease after creditors movement</b>		<u><u>-9,346</u></u>
<b>Bank Movement</b>	€	€
Opening Bank Balances Current a/c 01.04.2017	24,201	
Opening Loan Balance	<u>-129,350</u>	-105,149
Closing a/c Balances Current a/c 31.03.2018	5,142	
Closing Loan Balance	<u>-119,637</u>	-114,495
<b>Decrease in Bank Balances year ended 31.03.2018</b>		<u><u>-9,346</u></u>



## ACTIVITIES REPORT

### Community Centre - KCC

The completed Community Centre, opened by An Taoiseach Leo Varadkar on the 5<sup>th</sup> November 2017, has had a number of additional facilities added over the last year. The Town and Village Renewal Grant of €54,000 has been used to complete the café, common areas, stores, a business centre and facilities for physical therapy. The Centre now consists of approximately 15,000 square feet of community space which includes the already operational indoor football/basketball court, changing rooms and showers, fully equipped gym, viewing multi-purpose area, meeting room, treatment room, office storerooms, shared workspace for business/study and a café. In order to make the most of these facilities, the KBCDA has formed a number of subcommittees including a Café Committee led by Elaine Hughes, a Business Centre Committee led by Karen Curtis and a Gym and Sports Hall Committee led by Seamus Hughes. A coordinating group is also being established. Our thanks to Mary Fleming who has been responsible for designing the new KCC logo and associated signage. Our continued thanks to Tina Gregory, KCC Centre Manager, who continues to go above and beyond the call of duty on behalf of the community.

#### KCC Community Café

KCC Café opened its doors on 28<sup>th</sup> May 2018. Over the last 9 months the café has been a welcome addition to the centre in providing a space for both locals and visitors from afar to meet for a catch up, have a meeting along with great coffee & goodies.



*Café before Town & Village Renewal Grant (left) and after (middle and right).*

The café opens 7 days per week from 10.30am – 3.30pm. Chess, draughts and cards are also available for customers amusement. Daily newspapers and magazines are always available and all are welcome. Breakfast, light lunches, pizzas, crepes, smoothies, cakes, desserts along with our freshly baked homemade scones are on the daily menu. Of course, we are lucky to have local women Martina Gethings and Irene Molloy employed in the café to ensure customers are always looked after. Thank you to Martina & Irene.

A further addition to the service provided at KCC is “KCC Parties”. The main hall is supplied with bouncy castles, indoor ball games, a dedicated party room for food and drinks is available for rent for any celebration – birthday parties being particularly popular! In more recent times the offering of freshly made pizzas and popcorn is also on offer. Due to the popularity of the party offerings, a party coordinator was appointed in Irene Molloy to manage and welcome all party goers to the centre.

KCC Café would be delighted to welcome any group or society that is looking to meet on a regular basis. Meeting rooms can be arranged followed by tea/coffee and a chat. We are delighted to have school parents group, Parent & Toddler group visit us on a regular basis. The social aspect of who we are as a community is paramount and how best to socialise over a cup of tea and a fruit scone!

**Café subcommittee: Deirdre Sheriff, Aileen Cooper, Peter O'Connor, Karen Curtis & Elaine Hughes**

### **KCC WorkSpace**

This is a newly fitted out shared community workspace consisting of 12 dedicated workstations, 1 Private office and 1 Breakout / Meeting Room. The **WorkSpace** is now open and fully operational with affordable short and long term rental options available. Facilities include High Speed Fibre Optic Broadband, High Speed Printing facilities, access to meeting rooms, as well as access to the amenities of the centre. In addition, the large meeting room on the ground floor is available for hourly and daily rentals. This meeting room will be converted to a fully equipped conference room over the coming months. The KCC WorkSpace is an ideal hub for remote workers, start-ups, freelancers and more, who are looking for an affordable, flexible, office environment in a convenient location.



**Business and enterprise sub-committee: Anthony Donohoe, Enda Kavanagh, Dave Naughton, Jason Last, Peter O'Connor & Karen Curtis.**

### **KCC Community Gym and Sports**

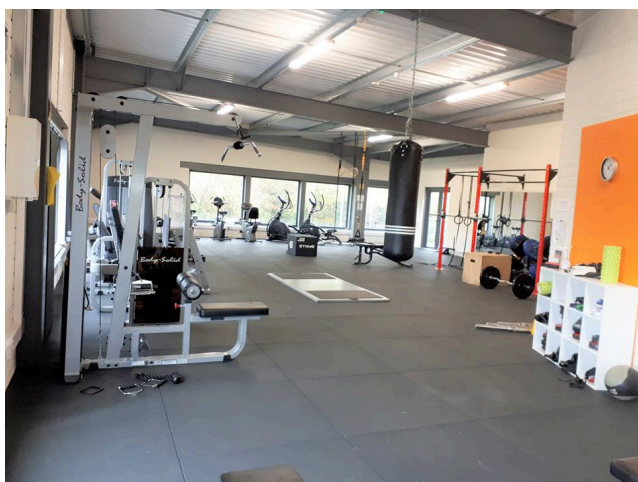
The community gym continues to be one of the success stories of the new Centre and since November 2017 over 350 people have taken out membership of which 247 are currently active members. The fall-off in membership of under 30% is less than the industry average of 40 % and the gym continues to be popular across all ages and genders, with



a constant flow of users from early morning till late at night. Improvements and additions to the gym continue to be made, including a major re-organisation of the layout, and these are based on feedback from members and from the gym sub-committee. As well as the KBCDA committee members, Jenny Connor, Keith Boland and Ross O' Loughlin as regular gym users have been co-opted onto the sub-committee and provide valuable insights and assistance which is much appreciated.




Recent additions and innovation include a new Bluetooth sound system and smart TV which allows instruction videos to be shown. An application has been made to the Sports Capital scheme for funding for an additional major piece of cardio equipment as well as a set of spinning bikes, and we hope to have news of this application in the new couple of



months. As well as providing a community facility the gym also allows qualified personal trainers to operate in a private capacity which brings an additional business dimension to the overall operation of the Centre. The sports hall has also been upgraded to incorporate professional basketball and indoor bowls equipment – the committee would particularly like to encourage their use.

**Gym Subcommittee:** Peter O'Connor, Tina Gregory, Enda Kavanagh, Jenny Connor, Julie Sammiller, Keith Boland, Michael D'Arcy, Pat O'Connor, Ross O'Loughlin & Seamus Hughes

**The Association are delighted to see the Community Centre being used so vigorously by members of the community and wider.**



## WorkSpaces @ KCC

Superb, newly fitted out shared community workspace Located at KCC Kilanerin Community Centre, Kilanerin, Gorey, Just off the N11.

Offering Hotdesk or dedicated DeskSpace to let on flexible short or long-term basis, with two meeting areas and On-Site Gym and Café.

HOT DESKING	DEDICATED DESKSPACE	MEETING & TRAINING ROOMS & EVENTS
<ul style="list-style-type: none"> <li>Flexible Hot Desking Space</li> <li>High Speed e-Fibre Connection</li> <li>Access to Meeting Rooms</li> <li>High Speed Printing Facilities</li> <li>Electricity, heating &amp; rates included</li> <li>On site Café</li> <li>On-Site Gym</li> <li>Free Parking</li> </ul>	<ul style="list-style-type: none"> <li>Permanent desk space</li> <li>High speed e-fibre connection</li> <li>Access to meeting rooms</li> <li>High Speed Printing Facilities</li> <li>Electricity, heating &amp; rates included</li> <li>On-site Café</li> <li>On-Site Gym</li> <li>Free Parking</li> </ul>	<ul style="list-style-type: none"> <li>Training Room Max 25 people</li> <li>Large Meeting Room Max 25 People</li> <li>Small Meeting Room Max 6 people</li> <li>Large Hall /Conferences</li> <li>Hourly, Half Day or Full day Bookings</li> </ul>
<p><b>PRICING</b></p> <ul style="list-style-type: none"> <li>€10 per day</li> <li>€40 for one week</li> <li>€150 for one month</li> </ul>	<p><b>PRICING</b></p> <ul style="list-style-type: none"> <li>€190 for 1 month</li> <li>€170 per month if booking for 6M</li> <li>€150 a month if booking for 12M</li> </ul>	<p><b>PRICING</b></p> <ul style="list-style-type: none"> <li>Hourly, Half Day or Full day Rates available on enquiry</li> </ul>

Enquires to [kcc.workspaces@kilanerin.com](mailto:kcc.workspaces@kilanerin.com)  
Come in and TRY IT for a day

**Launch DISCOUNT of 25% off**



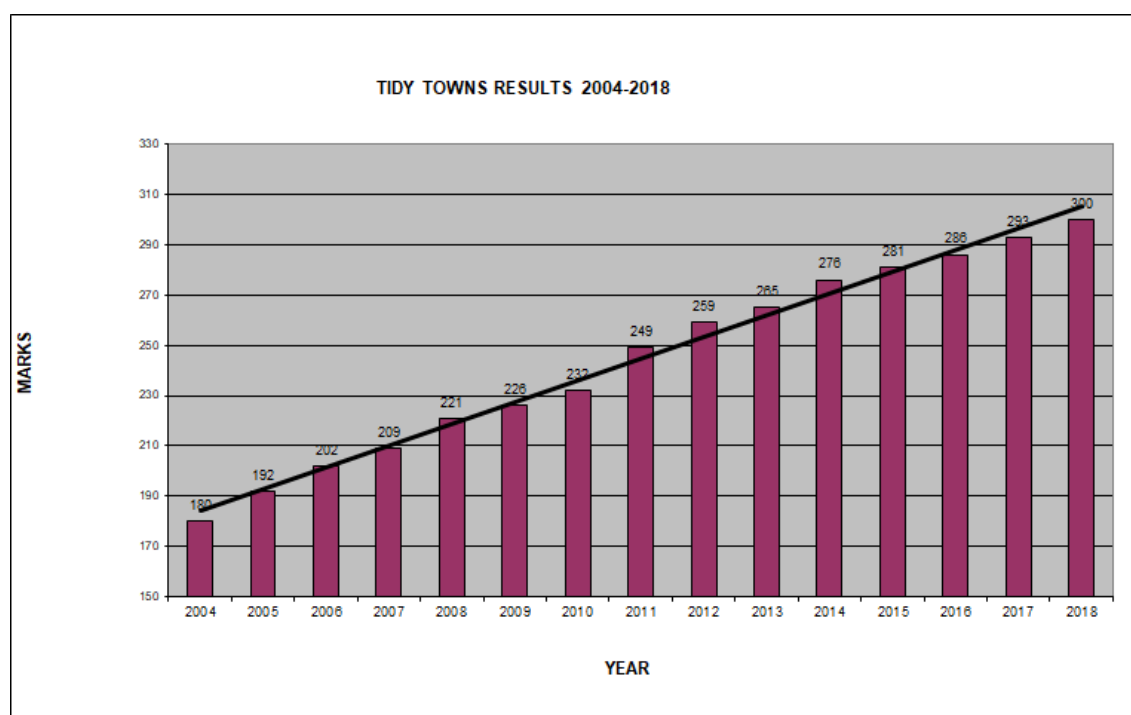
## Sheltered Housing Kilanerin

Kilanerin Sheltered Housing Association, run by John Bardon and his committee (Annie Kent, Mary D'Arcy, Paddy Hughes, Brian Hughes, Donal Hayden), continues to operate the sheltered housing units opposite the new Centre. All units are currently occupied but should someone feel they may have a need for a family member in the future they should contact a committee member of KSHA.

## Tidy Towns

KBCDA continues to assist the Tidy Towns campaign by the provision of 3 Community Employment Program (CEP) workers and one Rural Social Scheme worker, who work on a range of maintenance and development projects. Kilanerin Tidy Towns has another very successful year in 2018 and reached the significant 300 mark threshold for the first time. The village is now ranked among the top 8 competing villages in Co. Wexford and following on from this an external review by a former adjudicator, Ann O'Leary, was commissioned with a view to seeing could the village compete successfully at the upper end of the competition in Co. Wexford. A number of initiatives have arisen from this review and a three year plan (2019-2021) is currently being drawn up.

As well as routine planting, weeding and cleaning work, recent improvements in which the Tidy Towns group have participated include the erection of the Crann an Iarainn gateway sculpture, the installation of Wexford's first rural community EV charger, and the upgrading of the woodland walks, as well as the recent very successful Sustainability Fair. The original idea for the Sustainability Fair arose out of the KTT review process and well done to Karen Finnegan and the Sustainable Energy Community (SEC) committee for making it a reality. Another area where action was recommended was biodiversity and a number of projects to preserve and enhance biodiversity are currently under way. Thanks to all who have supported KTT fundraising events. Additional funding was obtained from POBAL and Wexford County Council. Thanks also to Gorey Municipal Council members and staff for their practical support and assistance.



## Gap Arts Festival

KBCDA is delighted to have been able to support the Gap Arts Festival through a limited yearly sponsorship and administrative support.

### THE GAP GOES TO EUROPE

Reaching out from Ballythomas and Annagh Hill, the Gap Arts Festival's *Community Portrait Project* has been nominated for a European Network for Rural Development *Rural Inspiration Award 2019*. Aisling Leonard, who was central to that Project and a core member of the Festival committee since it began in 2011 has been invited to the European Festivals Association *Atelier for Young Festival Managers* in Malta in March - a wonderful opportunity for her personally, and a chance to broaden the Festival's contacts towards collaborations with other festivals, artists and companies.

### BEST ONE YET

Here at home, the eighth Gap Arts Festival over the weekend of August 10-12<sup>th</sup>, 2018 was the most successful yet – and even the rain didn't dampen the spirit. There were more people, more participants, more artists, and more importantly, the volunteers and audience took ownership of the festival. And the artists responded to this unique welcome. 1250 adults and children attended as audience and participants during the two-day festival.

There was Pat Kinevane's powerful performance in *Silent*, outdoor and indoor cinema, art and acrobatic workshops, Kia Ora animals, the Gorey Ukes; and the premiere of the short film *Titania's Palace*.

*Titania* went on to Heritage Week in Kilanerin, Culture Night in Gorey, and on tour through the county, with an illustrated talk by James Grannell, from Bridgetown College to Gorey Library to Oakfield Nursing Home.

### NEW FACES AND NEW OPPORTUNITIES

As part of the Small Arts Festivals Scheme, there were first-time writers and first-time readers in the Poetry Workshops and Public Readings. Eighty children joined artist Dara McGee in painting a mural on the school wall. Young local artist Hannah Levingstone operated for the first time the Gap Cartoon Booth.





As part of the Creative Communities Scheme, Jimi Cullen mentored 6 young singers/musicians and bands. And with the help of Marc Aubele there were first-time public performances from the singers and bands, as well as opportunities for more established local bands, in *TheGig@TheGap*.

As part of *Bliain na Gaeilge*, 40 young children attended *Campa Samhraidh*, a 3-day bi-lingual summer camp. And 50 adults and children enjoyed *Béile Na Féile – The Festival Feast*, a bi-lingual community meal celebration.



BRINGING THE ARTS TO PARTS THEY WOULDN'T OTHERWISE REACH

And plans are being made for an exciting (and hopefully) musical Festival event next August 9 – 11<sup>th</sup>. See [www.gapartsfestival.com](http://www.gapartsfestival.com) and Facebook.

The number of audiences, participants, and of artists were all up, as were the range and spread of events and engagements on offer; but it wasn't only the numbers. This year will be remembered for the opportunities it gave to people, particularly the young, to engage with and participate in the arts.

## Communications



Ionad Pobail Choill an Iarainn  
Kilanerin Community Centre

The community website, [www.kilanerin.com](http://www.kilanerin.com), contains a wealth of information on the area as well as up to date news of events and is updated regularly by Damian Nash to whom we extend our sincere gratitude. In addition, you may have noticed the bright new signs at the entrance to Kilanerin Community Centre and smaller finger-point signs? The process of establishing a brand identity took place in the second half of 2018. There was a concern that some people did not know about the centre, how to find it, or its purpose. Naming ideas were sought from the wider community and a sub-committee reviewed these. It was decided to continue with the name that has grown on people since the centre was opened - 'KCC' - short, familiar and logical. Mary Fleming designed a selection of logos to capture the essence of the KCC and one was chosen by the sub-committee. It represents the steep virtual mountain the community has climbed in order to build the centre, and also the much-loved Croghan Mountain, which is the permanent backdrop to all sections of our locality. The psychology of the colour orange fits the brand persona of KCC perfectly... being the colour of adventure and social communication, it radiates warmth and happiness, combining the energy and stimulation of red with the cheerfulness of yellow; it encourages spontaneity and a positive outlook on life and is great to use during tough economic times - keeping us motivated and helping us to look on the bright side of life!! Our thanks to Mary Fleming for her outstanding work.

## Community Gain Fund

Our community is represented on the Raheenleagh Windfarm Community Fund evaluation committee by Mary Fleming (Ballythomas), Myles Carroll (Ballyfad) and Peter O'Connor (Kilanerin).

A total of €48,699 was awarded this year from the Windfarm fund to 7 projects in KBCDA area, including €22,500 to GAA for lights and €15,950 to Ballythomas National School for a playground. Total windfarm funding obtained since the start of fund for projects in KBCDA area is €267,630. The main projects which received multi-annual funding are Ballyfad Hall (€95,000) and the All-Weather pitch Kilanerin (€90,000).

## Woodland Walks

A lot has happened in the past year with regards to our beautiful local amenity, Kilanerin/Curragh woods. You can now enjoy a walk through the 6.5km figure 8 looped trails in **all** seasons, the drainage and surface work is complete to National Trails Office and Wexford Walking Trails standard. The Kilanerin loop is now



Before works

After

buggy and all-terrain wheelchair (available by booking from KCC) accessible. This project has developed on a community basis, organized by KBCDA with grant aid coming from the Dept. of Community and Rural Development Outdoor Recreational Infrastructure Scheme and Raheenleagh Windfarm Community Fund. Further funding came through WCC, KBCDA, KTT, WWT and The Lavender Farm. There is continuous local voluntary work by KBCDA members and CE and RSS workers. Pathways for horses are now being actively developed in collaboration with community members. Thanks to Gráinne Hartnett for all her input on this.

## Fundraising

The voluntary contribution scheme ended officially in April 2016 but a number of members are still paying their monthly contributions or have transferred them into gym membership. Members of KBCDA are extremely grateful to all those that continue to contribute by either method.

Since the Strictly dancing competition, reported at the last AGM, further fundraising efforts have concentrated on raising funds for the local playground. Additional funds have been raised through seeking grant aid, with success in both last year's Town and Village Renewal Scheme and the more recent LEADER funding call for Youth Facilities.

## Playground Committee

The playground committee are please to inform you that €13,000 has been raised by the efforts of many in a variety of fundraising activities over the last 9 months; Helena's Christmas Flower arranging, donations from community members, a first ever Christmas Fair, a Christmas Raffle in collaboration with Kilanerin National School and a 5k/10k fun run in collaboration with the Kilanerin GAA Club. Wexford County Council are granting €25,000 and the remaining €12,000 to be raised will be made up of grants, business donations and other smaller fundraising activities. We are therefore confident that we will have sufficient funds to commence building the playground over the next few months with the aim of having the playground over the summer months. We are now calling on any local businesses to pledge €250, and we will put in place a sign listing all businesses and local groups that have supported the development. In the meantime, sincere thanks to all those who supported the fundraising events to date, and particular thanks to the playground committee: Aileen Cooper, Aine O'Sullivan, Deirdre Sheriff, Donal Buggy, Fionntán Ó Súilleabháin, Julie Sammiller, Maria Gethings, Padraic Caulfield, Jason Last & John Hegarty.



**KILANERIN**  
**CHRISTMAS FAIR**

KILANERIN COMMUNITY CENTRE @KCC

**Sun 16<sup>th</sup> December**  
**Open From 2pm-5:30pm**

Stalls with ~ Jewellery  
~ Woodcrafts ~ Flowers ~ Home Baking ~  
Local Foods ~ Local Services and lots more!

**Come See Santa!**

All Vendor Stalls cost €15 which supports our local Playground Fund.  
Everyone is welcome. If you would like to reserve a stall, please contact:  
Karen on 087-1401981 or Aileen on 087 9764332 or Aine on 086 807 8404

5k and 10k Road "Lost Reindeer" Road Run & Inaugural Christmas fair, Helena's Florist Demonstration and just some of the prizes in the Mega Christmas Draw 2018 in aid of Playground.

**Helena's Florists**  
is kindly hosting  
**A Christmas Floral Demonstration**  
At Kilanerin Community Centre, Kilanerin  
**On Wednesday December 5<sup>th</sup> at 7:30pm**  
All proceeds to  
**Kilanerin Playground**  
**Tickets €10 pre book to ensure your seat or pay on the door**  
Tickets available from KCC  
**Refreshments included**

### Kilanerin Playground Mega Christmas Draw



Name.....  
Address .....  
.....  
Telephone No. ....

### Kilanerin Playground Mega Christmas Draw

- 1st. 4\* Seafield Hotel Overnight stay in Junior Suite Dinner & Breakfast (Seafield)
- 2nd. 4\* Midlands Park Hotel Overnight Stay Bed & Breakfast
- 3rd. €200 of fire logs delivered (Paddy Gethings)
- 4th. €200 voucher for Murphy's Gala Kilanerin (Noel Murphy)
- 5th. Kilanerin Gym -1 years free Gym membership (worth €200)
- 6th. Full Professional Car Valet including paint correction and full vehicle health check worth €150 (O'Sullivan Auto)
- 7th. 4 tickets to Leopardstown Christmas Racing Festival (Apex Geo services)
- 8th. KCC childrens party with 2 bouncy castles (worth €120)
- 9th. Voucher for €100 (Redmond Electric)
- 10th. Skincare product hamper worth €100 value. (Aileen Cooper)



Plus many more prizes kindly sponsored by Claymazing, Contra, Gorey Cinema, McGuire's Jewellers, Dolly's Hair Salon, Toymaster, BETechnologies, Funge's, Partridges, Fifth Avenue, Place, Book Station, Deirdre Sheriff, KBCDA

**Tickets kindly sponsored by Gethings Carpentry and Allan Cooper, Builder**  
**Draw will take place 18th Dec at Kilanerin NS school Christmas event**  
**Tickets €2 each — Book of three €5.00**

Permit Granted by Gorey Garda Station

## Community Men's Shed

A local Men's Shed has been initiated and is still in the process of being set up, with twelve members already! Anyone interested in joining can contact Dave Coates, Dave Naughton or Jim Hughes.

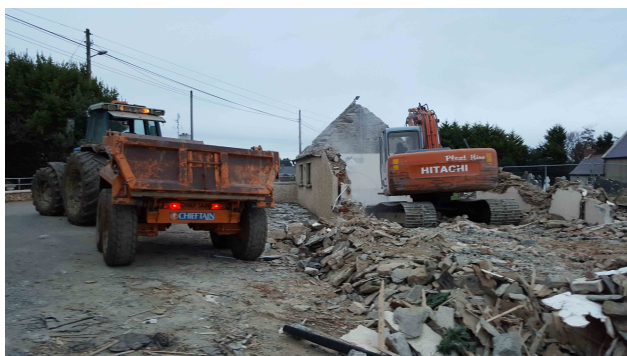


**Kilanerin Men's Shed Inaugural Meeting**



## Ballyfad Hall

KBCDA has contributed to the development of a new community hall in Ballyfad. The work, which commenced with site clearance in November 2017, is being advanced under the direction of the Ballyfad Community Hall Committee consisting of Pat O'Connor, Myles Carroll, Mary D'arcy, Pat Cullen, Bernadette Cullen, Philomena O'Toole, Gordon Tutty, Lilly Boland, Tom Forde, Fr. Browne PP. The committee has engaged in multiple fundraising activities over the last two years; examples include successful application to the wind-farm community grant scheme, pub quizzes, community fire-log auctions, 3 Peak Challenge and variety concert. The committee are hoping for further LEADER and/or Wexford County Council funding to help complete the internal fixtures, fittings and furnishings with an expected completion date of August 2019. The committee had completed a local community survey before the project started which set out the need for a modern hall with good facilities for groups to enhance and improve their talents and skills. The team are looking forward to supporting everyone who wishes to use the facilities in the Ballyfad New Hall and fulfilling their wish to develop the local community.



## Ballythomas Community Field

Ballythomas Community Field continues to improve in terms of usage and drainage is improving year on year. Yogalates classes were held on Friday mornings. The children from Ballythomas school enjoy games and PE in the field. The Gap Arts Festival screened an outdoor film in August, which was very well attended. Annual running costs include public liability insurance and grass cutting. The boundary fence will need significant maintenance in the near future. A pub quiz and production of the Local Guide have helped offset costs. Many thanks to Paddy O'Toole for all his hard work around the Field and to Brigid Nolan also.

## Sustainable Energy Community

In August 2018, KBCDA gave go ahead to establish our area as a Sustainable Energy Community (SEC). A leadership group was created from across the broadest possible set of groups in the communities.

In short order, through the guidance of Karen Finigan, the group created a Community Charter and submitted our application for Grant funding to develop baseline knowledge of the current energy footprint across our communities.

The grant application was accepted on 22<sup>nd</sup> Feb, 2019. Our next project is development of the baseline and creation of a prioritised list of projects that will improve our energy footprint from what it is today. More prominently, the SEC, as a community collaboration involving multiple groups, put in plus a Sustainable Energy Fair in February 2019. Thanks to the work of this group, and EV Charger is now installed at KCC Karen offers an open thank you letter to all those involved. Karen features in the middle of the picture taken from the sustainability fair below.



Open Letter to North Wexford and beyond –

28 February 2019

Our Sustainability Fair, held on Sunday 24<sup>th</sup> February at Kilanerin Community Centre, was a great success due to each one of you.

To **the 500-600 individuals** who spent time at the fair – we did this for you, and you came; many, many thanks.

We sincerely hope that you found at least one shift / change / new idea that you can incorporate into your household that will be a step in the direction of adding to the sustainability of your lifestyle. One step or one more step; the beginning of a journey or the next move forward – all is necessary and each step is a welcome change.

To **the school children** who created images and messages about the Wexford they imagine in 100 years' time, you brought a wealth of ideas forward for us to reflect upon, your work enriched the fair.

To **the companies** whose products and services are available to improve our use of energy resources; **the not-for-profit organisations** whose mission to provide guidance to us all in seeing ways to live more sustainably; **the individuals** with a strong interest in bringing awareness of the issues and potential answers to how we best live more sustainable lives - each representative who gave their time and knowledge to our Sustainability Fair, it would not have happened without each of you.

To **our sponsors**; your encouragement, support and belief in the concept allowed us to create this fair. It would not have happened without you.

To **the many who volunteered** time to bring the exhibitors, speakers and space together in a truly outstanding manner, it would not have happened without each one of you.

Thank you all. We hope to see you next year. Connect with us and continue growing your sustainable life, one step at a time.





## Representations

Contact has been maintained with Council staff, local Councillors, TDs, Senators, WLD, Wexford Public Participation Network, the Gorey District Tidy Towns network, Coillte, ESBI, the Raheenleagh Windfarm Fund and the Department of the Environment, among others. This has been done by way of meetings and attendances at seminars, public meeting and consultations.

Thanks to committee members Minister Michael D'Arcy, Council Chairman John Hegarty and Councillors Donohoe and Ó Súilleabháin for their work and support.

## Public Participation Network (PPN)

The Wexford Community Forum has been replaced by the new format PPN. The Development Association is a registered member and urges other community bodies to do the same. Peter O'Connor has been elected as PPN Community and Voluntary representative on the Wexford County Council's Local Community Development Committee (LCDC).

## Grants and supports received in 2018/19

- Payment for Community worker under the Rural Social Scheme.
- Funding of 3 Community Employment Scheme Workers to carry out community work in Ballythomas, Ballyfad and Kilanerin from the Department of Social Protection.
- TÚS worker for Ballythomas.
- Town & Village Renewal Grant awarded September 2018 for €54,000 from the Department of Rural & Community Development to fund finishes in key areas of KCC.
- Youth Facilities Grant awarded January 2019 for €12,302.52 from Wexford LEADER programme to provide for facilities at KCC, including completion of the viewing area, the provision of equipment.
- Amenity grant towards Tidy villages work in Ballyfad, Annagh & Kilanerin. Provision of trees, clean up kits, and waste disposal facilities for Tidy Towns Group from Wexford County Council.
- Smart Villages Grant from WCC CEP of €3,000 to install EV car charger.

## Work Program 2019/20

- Support Ballyfad Hall group in completing a new community hall.
- Addition of Bridle Paths to Woodland Walks.
- Continued support of Tidy Villages, Arts Groups and other activities.
- Install a playground.
- Operationalise KCC WorkSpace.
- Develop Youth Facilities for 14 to 18 year age group, including study space.
- Develop Governance Code
- Solar Farm initiatives in Collaboration with Enda Kavanagh
- 5G Community Base Station

**KILANERIN BALLYFAD COMMUNITY DEVELOPMENT ASSOCIATION CLG,  
COMHARCHUMANN FORBARTHA COILL AN IARAINN BAILE FADA**

**NOTICE OF ANNUAL GENERAL MEETING**

**Community Centre, Kilanerin (KCC) Meeting Room**

**Tuesday 19<sup>th</sup> March 2019 at 8.00pm**

**AGENDA**

1. Minutes of last AGM
2. Treasurers Report
3. Annual Report
4. Playground Development
5. Sustainable Energy
6. Community renewable energy scheme
7. Youth Facilities Grant
8. Resuscitation Awards
9. Election of Committee Members
10. AOB

**KILANERIN BALLYFAD COMMUNITY DEVELOPMENT ASSOCIATION  
COMHARCHUMANN FORBARTHA COILL AN IARAINN BAILE FADA**

**NOMINATION FORM**

**BALLYTHOMAS / ANNAGH AREA**

**Nominee:** \_\_\_\_\_

**Proposer:** \_\_\_\_\_ **Seconded:** \_\_\_\_\_

**BALLYFAD AREA VACANCY**

**Nominee:** \_\_\_\_\_

**Proposed by:** \_\_\_\_\_ **Seconded by** \_\_\_\_\_

**KILANERIN AREA VACANCIES**

**Nominee:** \_\_\_\_\_

**Proposed by** \_\_\_\_\_ **Seconded by** \_\_\_\_\_

**Nominee:** \_\_\_\_\_

**Proposed by** \_\_\_\_\_ **Seconded by** \_\_\_\_\_

**NOMINATION FORMS TO BE RETURNED TO MR CATHAL O'SULLIVAN, SECRETARY KBCDA,  
c/o COMMUNITY OFFICE, KILANERIN by March 15<sup>th</sup> 2019.**